



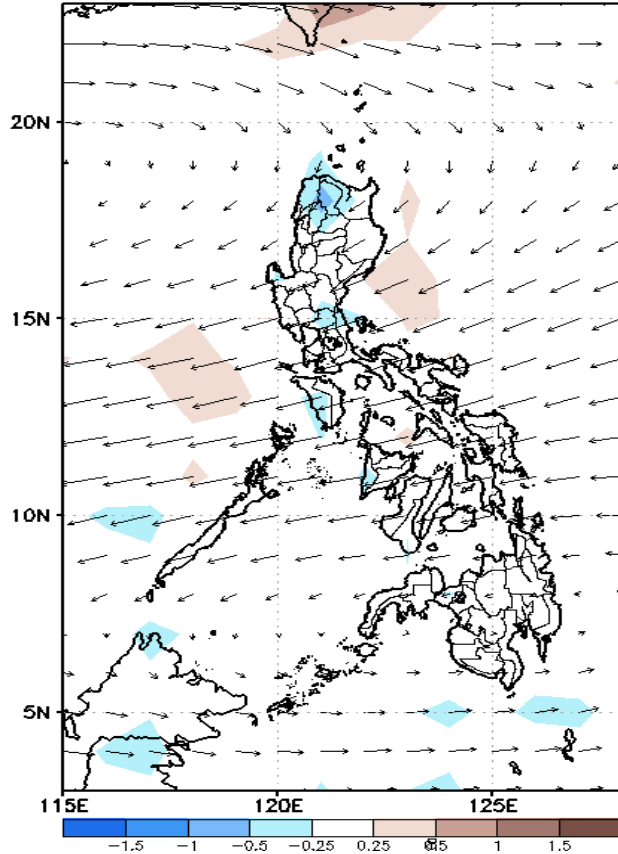
Week 1 & Week 2 Forecast for the Philippines using GEFS Model



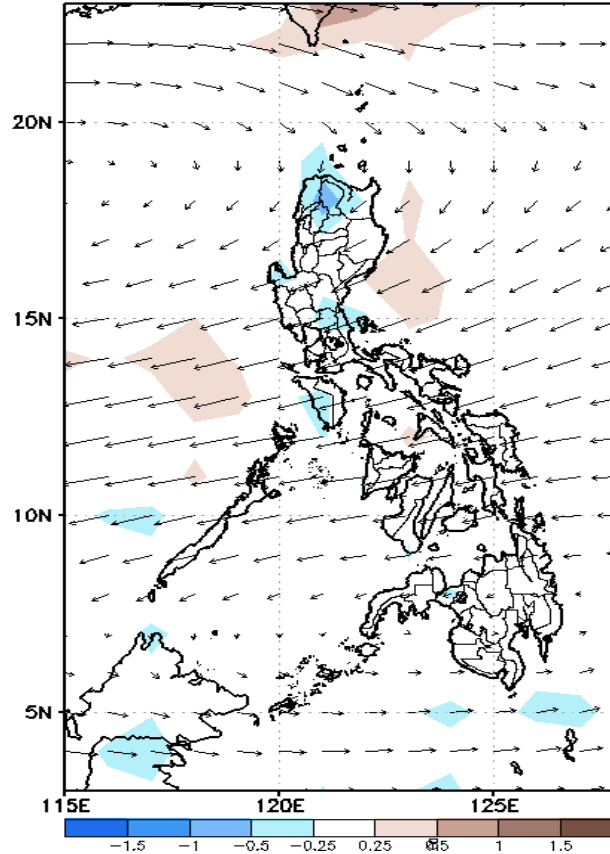
GEFS Week-1 Forecasts: Divergence & Wind Anomaly

Week 1: Nov 15-21, 2021

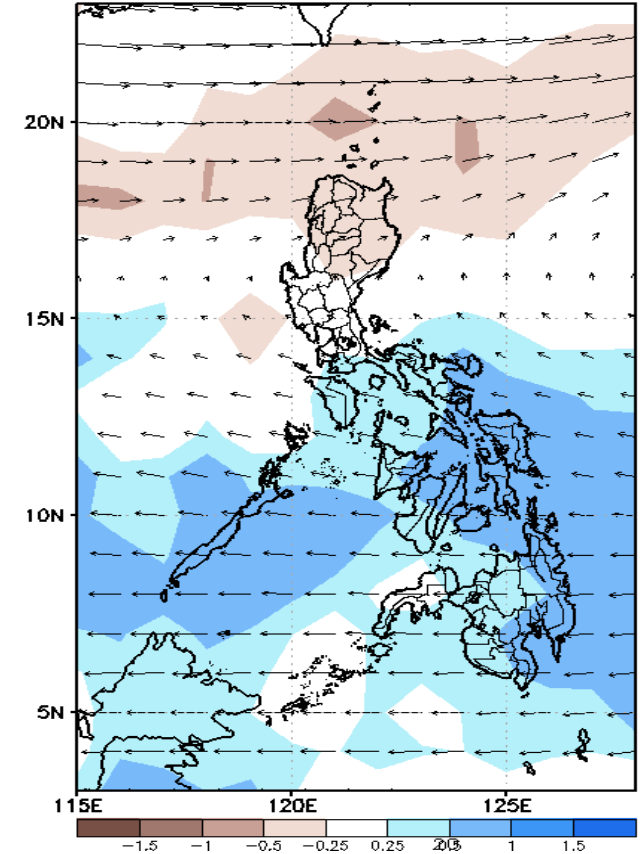
GEFS Week-1 850-hPa Divergence and Wind Anom
Valid: 20211115 - 20211121



GEFS Week-1 700-hPa Divergence and Wind Anom
Valid: 20211115 - 20211121



GEFS Week-1 200-hPa Divergence and Wind Anomaly
Valid: 20211115 - 20211121

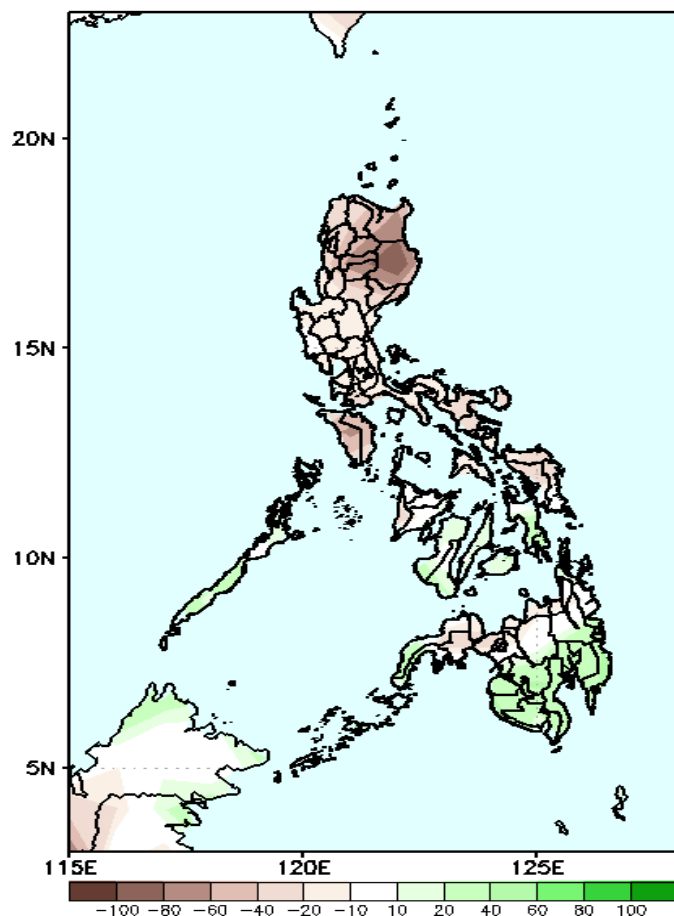


Upper and low level Divergence suggest likelihood of light to moderate precipitation in Bicol region, MIMAROPA and most parts of Visayas and Mindanao. Northeast Monsoon affecting Eastern Luzon while Easterlies affecting the rest of the country during the forecast period.

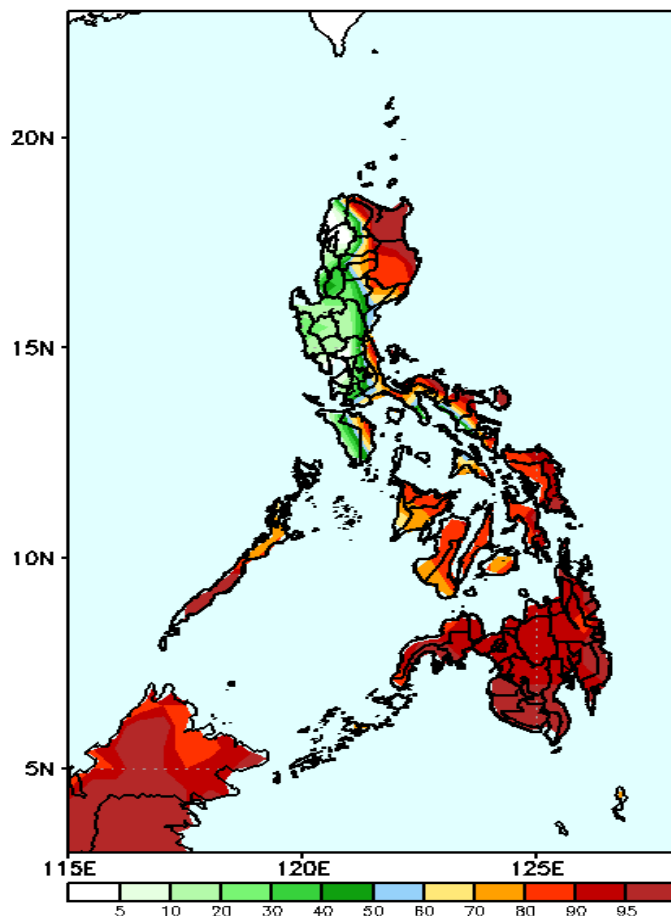
Precipitation Anomaly and Exceedance Probability > 25/50 mm

Week 1: Nov 15-21, 2021

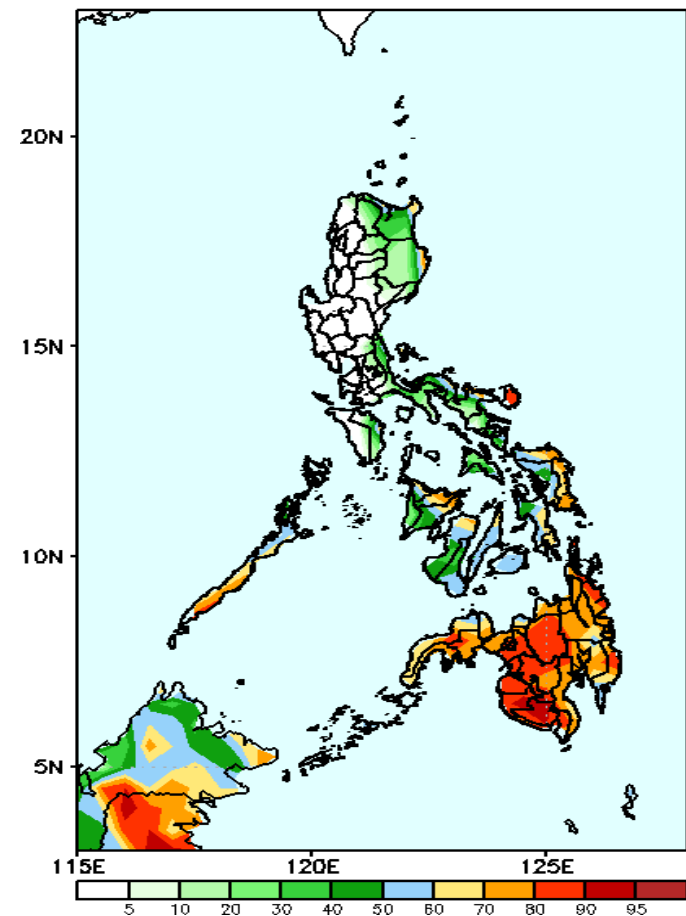
GEFS Week-1 Precip Anomaly
Valid: 20211115 - 20211121



GEFS Week-1 Exceedance Prob. > 25mm
Valid: 20211115 - 20211121



GEFS Week-1 Exceedance Prob. > 50mm
Valid: 20211115 - 20211121



Rainfall deficit of 20-80mm in most parts of the country is expected except in the southern part of Mindanao where there is increase of rainfall of 20-50mm during the forecast period.

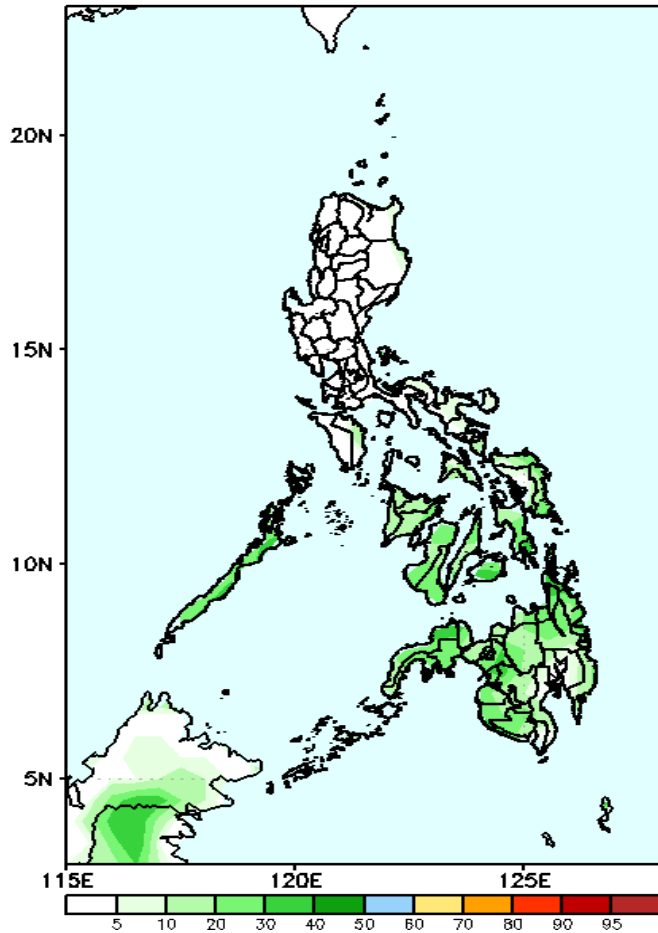
High probability of rainfall to exceed 25mm in Eastern Luzon, parts of CAR, Palawan and most parts of Visayas and Mindanao while less likely for the rest Luzon during the forecast period.

High probability of rainfall to exceed 50mm in Catanduanes, Palawan, parts of Western and Eastern Visayas and most parts of Mindanao while less likely for the rest of the country during the forecast period.

Exceedance Probability > 100/150/200 mm

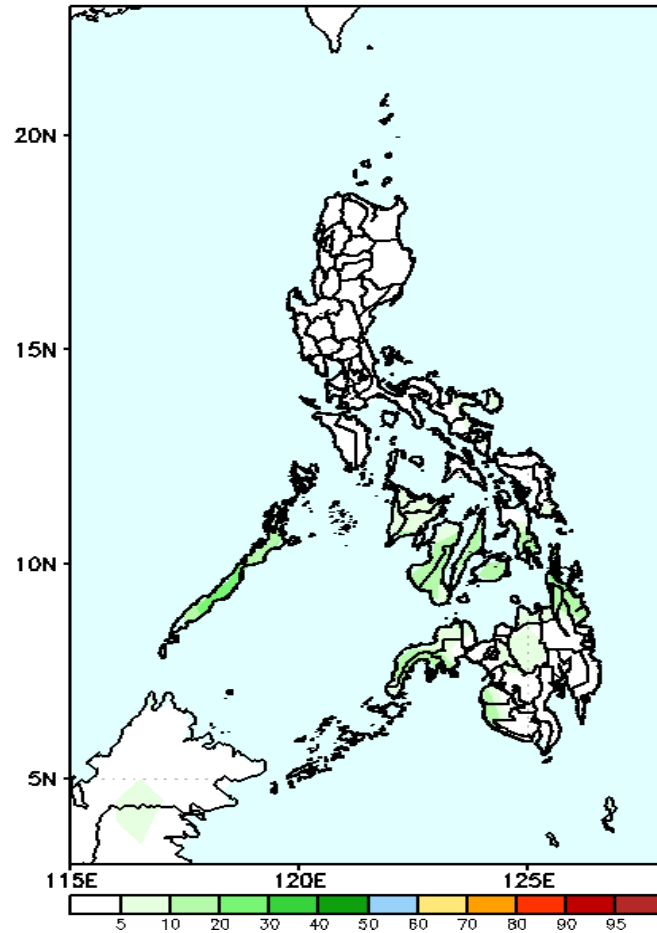
Week 1: Nov 15-21, 2021

GEFS Week-1 Exceedance Prob. > 100mm
Valid: 20211115 - 20211121



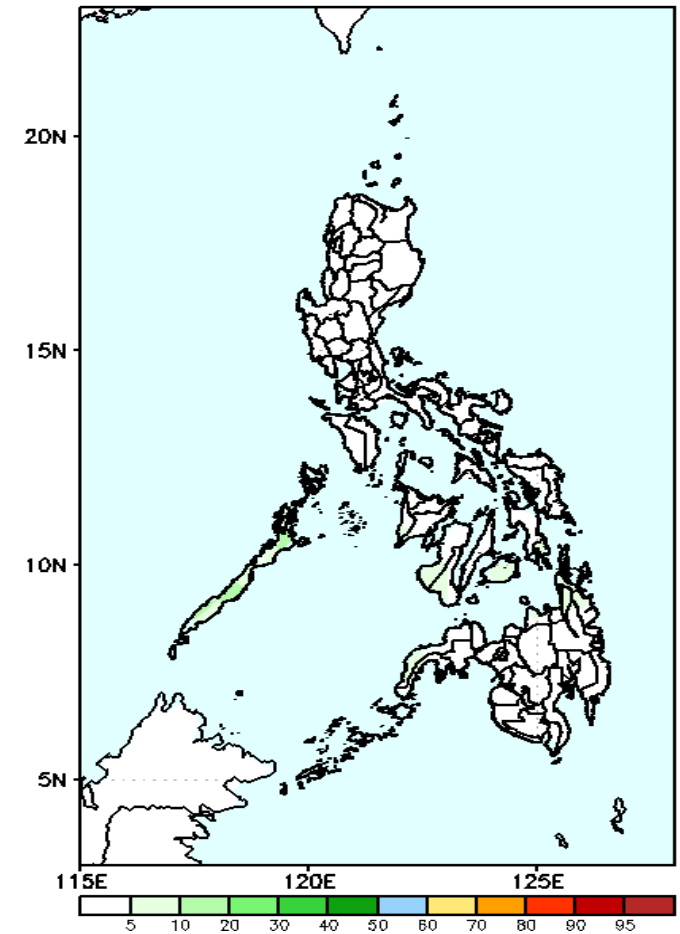
Less probability of rainfall to exceed 100mm in most parts of the country is expected during the forecast period.

GEFS Week-1 Exceedance Prob. > 150mm
Valid: 20211115 - 20211121



Less probability of rainfall to exceed 150mm in most parts of the country is expected during the forecast period.

GEFS Week-1 Exceedance Prob. > 200mm
Valid: 20211115 - 20211121



Less probability of rainfall to exceed 200mm in most parts of the country is expected during the forecast period.



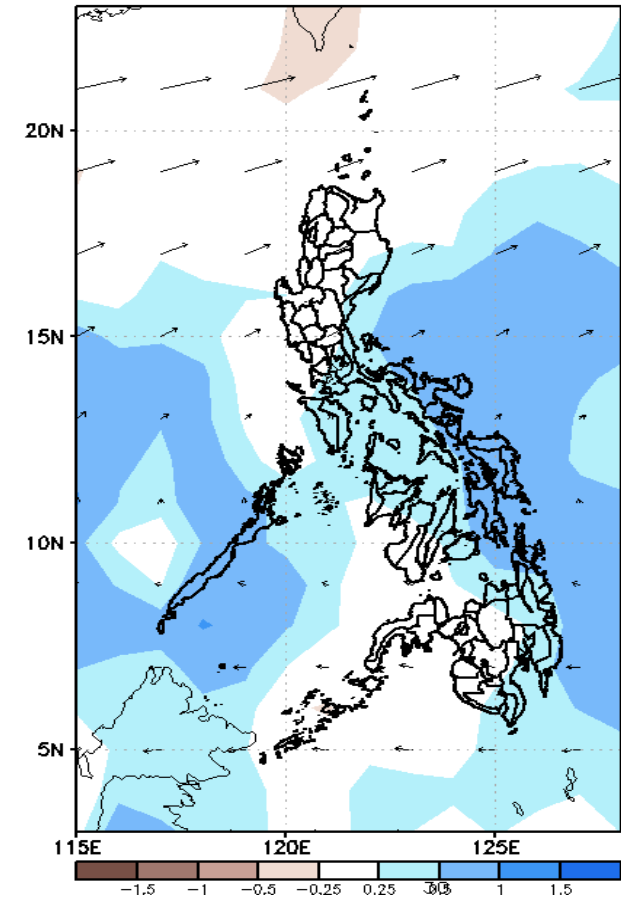
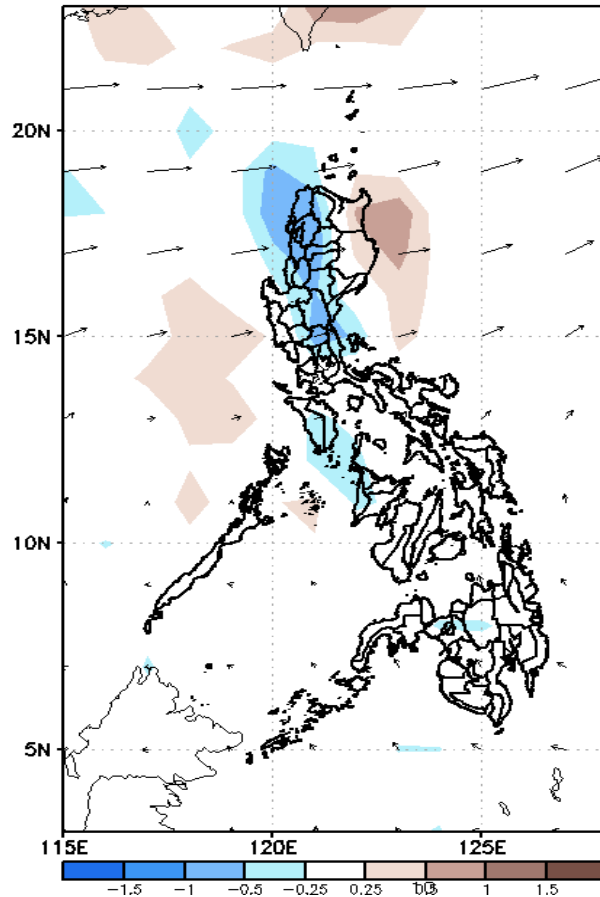
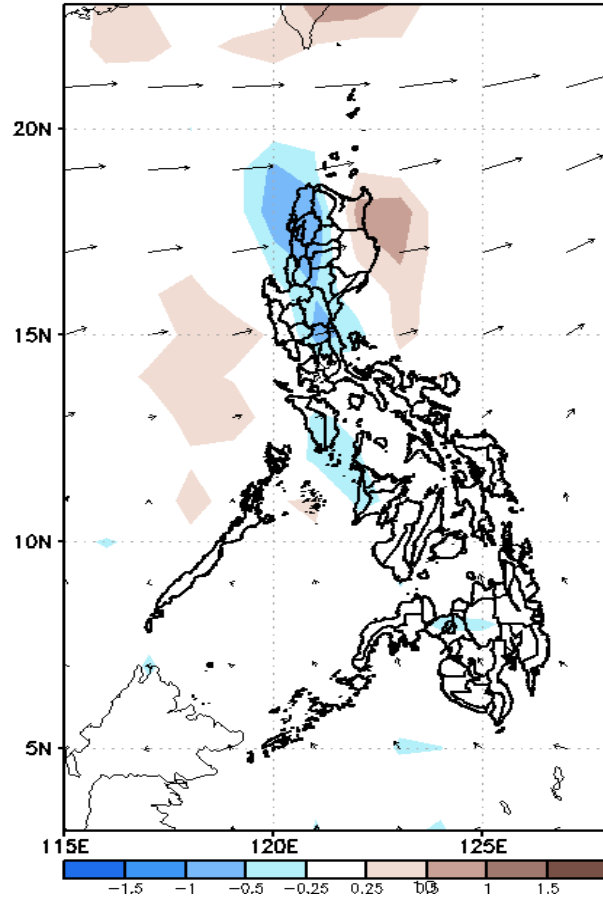
GEFS Week-2 Forecasts: Divergence & Wind Anomaly

Week 2: Nov 22-28, 2021

GEFS Week-2 850-hPa Divergence and Wind Anomaly
Valid: 20211122 - 20211128

GEFS Week-2 700-hPa Divergence and Wind Anom
Valid: 20211122 - 20211128

GEFS week-2 200-hPa Divergence and Wind Anom
Valid: 20211122 - 20211128

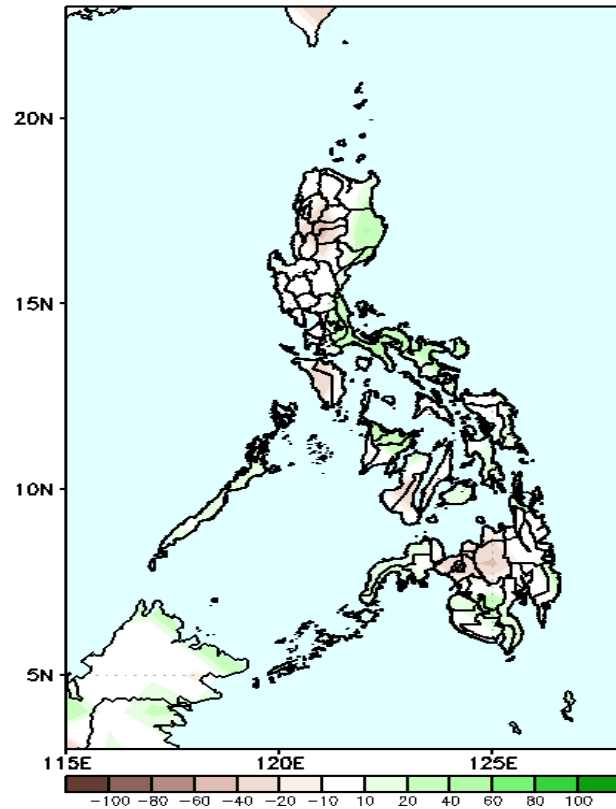


Upper and low level Divergence suggest likelihood of light to moderate precipitation in Aurora, most parts of Southern Luzon, MIMAROPA and most parts of Visayas and Mindanao. Northeast Monsoon affecting eastern sections of Luzon and Visayas while Easterlies affecting the rest of the country during the forecast period.

Precipitation Anomaly and Exceedance Probability > 25/50 mm

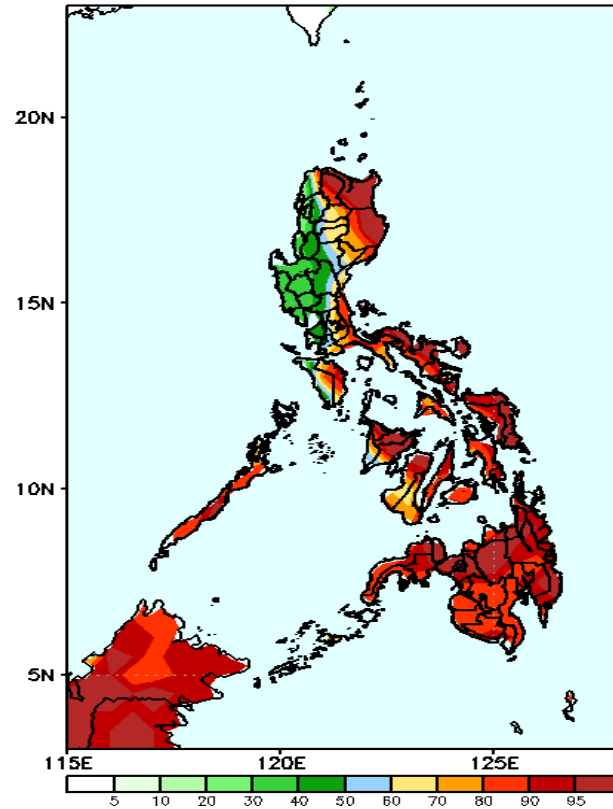
Week 2: Nov 22-28, 2021

GEFS Week-2 Precip Anomaly
Valid: 20211122 - 20211128



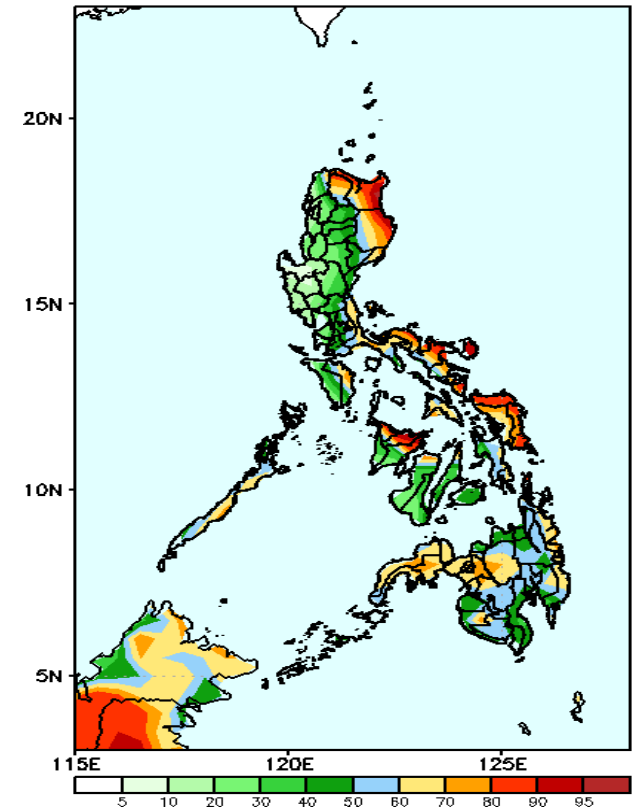
Rainfall deficit of 20-80mm in most parts of the country is expected except in some areas in Eastern Luzon where there is 20-60mm increase of rainfall during the forecast period.

GEFS Week-2 Exceedance Prob. > 25mm
Valid: 20211122 - 20211128



High probability of rainfall to exceed 25mm in most parts of CAR, Eastern Luzon, most of MIMAROPA and most parts of Visayas and Mindanao while less likely for rest of Luzon during the forecast period.

GEFS Week-2 Exceedance Prob. > 50mm
Valid: 20211122 - 20211128

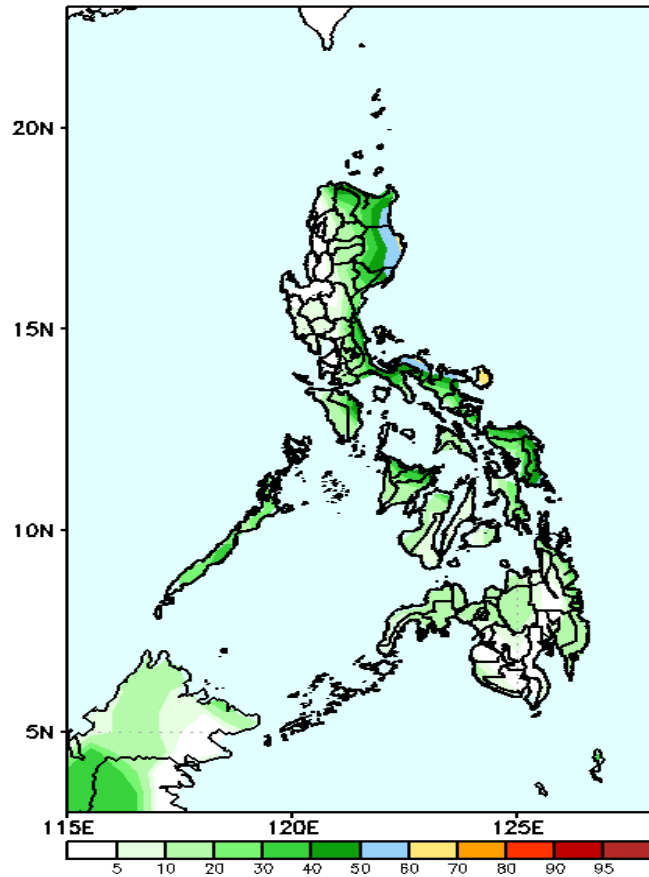


High probability of rainfall to exceed 50mm in the Eastern section of the country, parts of MIMAROPA, portions of Panay Island, Eastern CAR, parts of Central Mindanao and Zamboanga while less likely for rest of Luzon during the forecast period.

Exceedance Probability > 100/150/200 mm

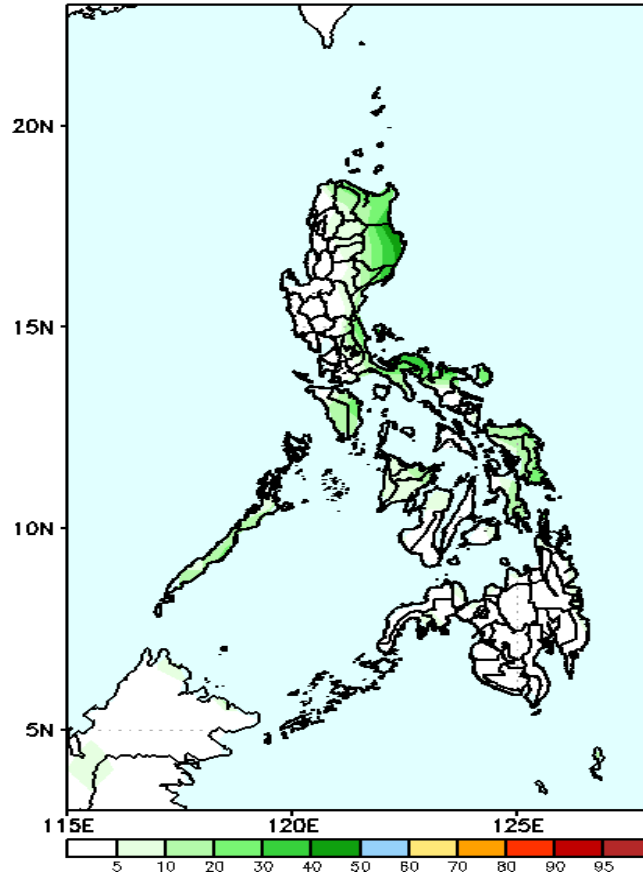
Week 2: Nov 22-28, 2021

GEFS Week-2 Exceedance Prob. > 100mm
Valid: 20211122 - 20211128



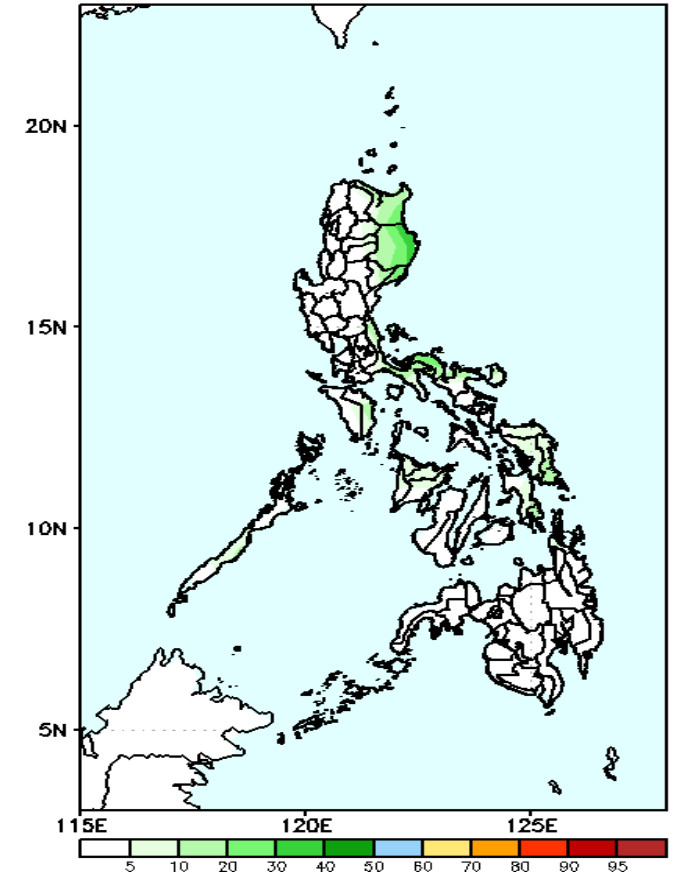
Less probability of rainfall to exceed 100mm in most parts of the country is expected during the forecast period.

GEFS Week-2 Exceedance Prob. > 150mm
Valid: 20211122 - 20211128



Less probability of rainfall to exceed 150mm in most parts of the country is expected during the forecast period.

GEFS Week-2 Exceedance Prob. > 200mm
Valid: 20211122 - 20211128

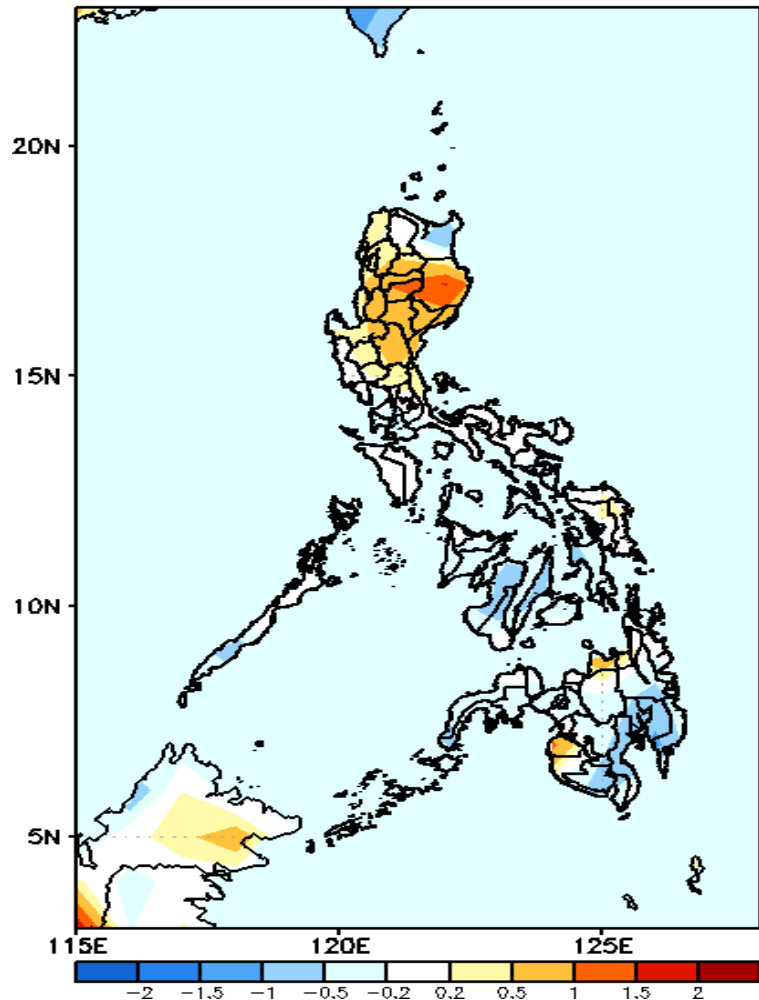


Less probability of rainfall to exceed 200mm in most parts of the country is expected during the forecast period.



GEFS Week-1 & 2 Forecasts: T2m Anomaly

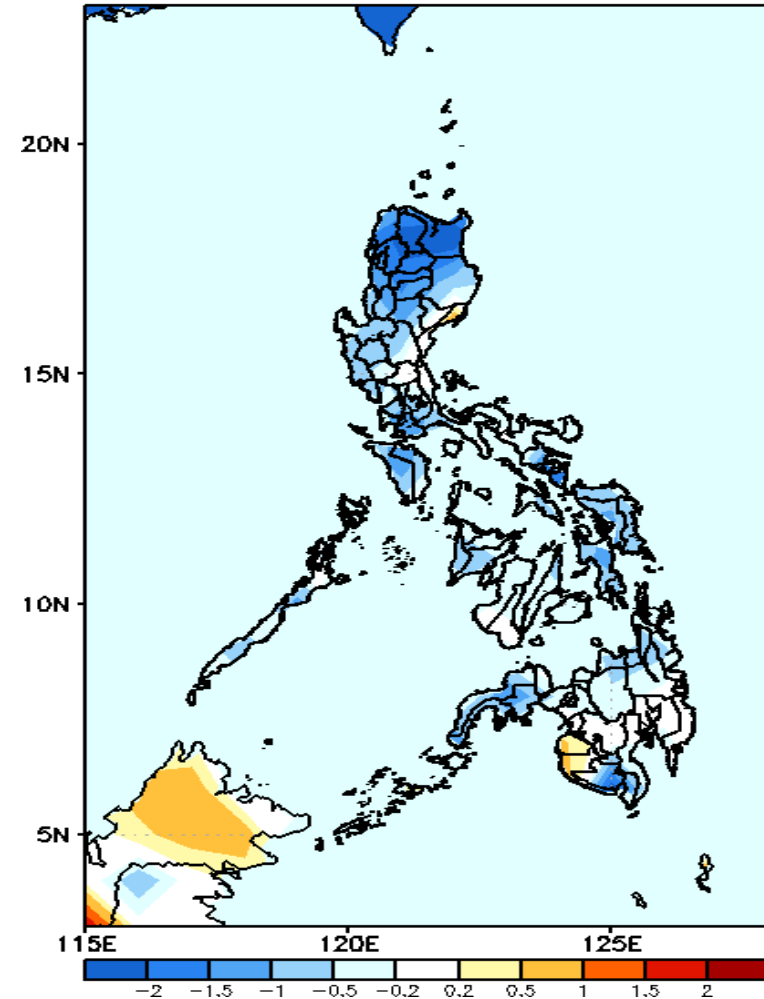
GEFS Week-1 T2m Anomaly
Valid: 20211115 - 20211121



2m Temperature Week 1: Nov 15-21, 2021

Slightly warmer to warmer than average surface air temperature will likely experience in most parts of Luzon (except in Cagayan), Maguindanao and Misamis Oriental while average to slightly cooler temperature for the rest of the country during the forecast period.

GEFS Week-2 T2m Anomaly
Valid: 20211122 - 20211128



2m Temperature Week 2: Nov 22-28, 2021

Slightly cooler to cooler than average surface air temperature will likely experience in most parts of the country except in Maguindanao & Sultan Kudarat where slightly warmer temperature is expected during the forecast period.